

Forest Legacy Program



- Protects Private Working Forestlands
- Focus on "At Risk" Forestlands
- A voluntary program using Conservation Easements
- National program, - competitive within each state and between states.
- Annual application (May 31st)

- Idaho Dept of Lands is the administrator and holds the easement
- A Land Trust is required to be the project sponsor.
- Funding comes from the Land & Water Conservation Fund
- Funding pays for Conservation Easements (75% payment)

Conservation Easements

- All traditional uses are allowed (Ag, Forestry, Livestock, cottage industries, rentals, gravel pits). ***“Working Resource Lands”***
- Landowner continues to own the land.
- CE’s limit commercial development, subdivision, most mining.
- Homes/shops/barns/outbuildings are permitted on each parcel if the owner desires.
- Property taxes do not change. Yield taxes do not change.
- Conservation easement is perpetual.
- Public use is sometimes included.

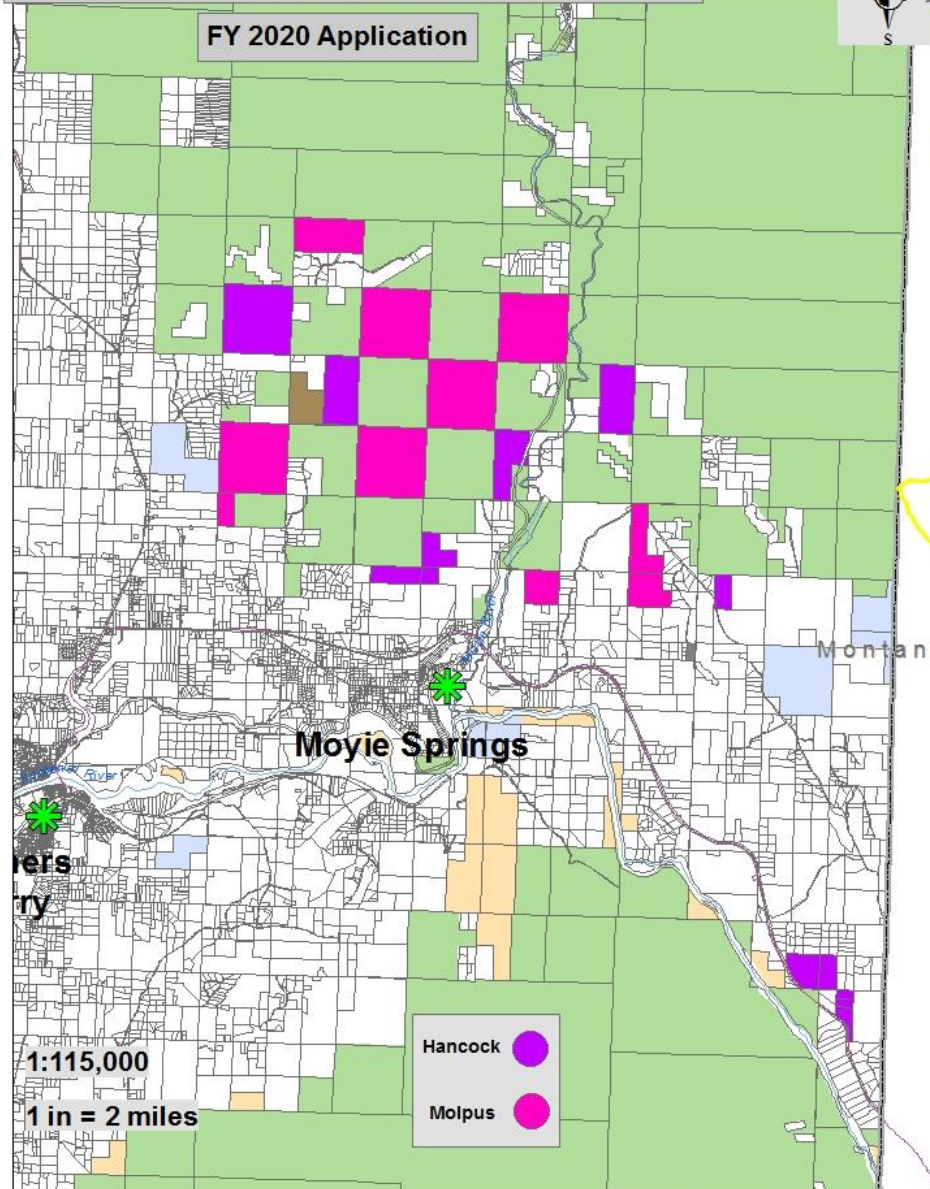
Moyie River Forest Legacy Project

FY 2020 Application



Hancock: 2,172 Acres
Molpus: 4,144 Acres

Total: 6,326 Acres



A Manulife Asset Management Company



MOLPUS WOODLANDS GROUP

Our Resource-Based Economy

Needs to be in Balance!



Forest Products Industry needs **"Certainty"** on Log Supply

Forest Landowners need **"Markets"** to sell their Logs & Fiber

InfraStructure

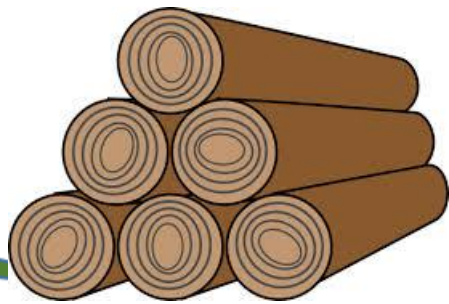
Resource Lands

Jobs, Taxes, Profit

Community Stability

Jobs, Taxes, Stumpage

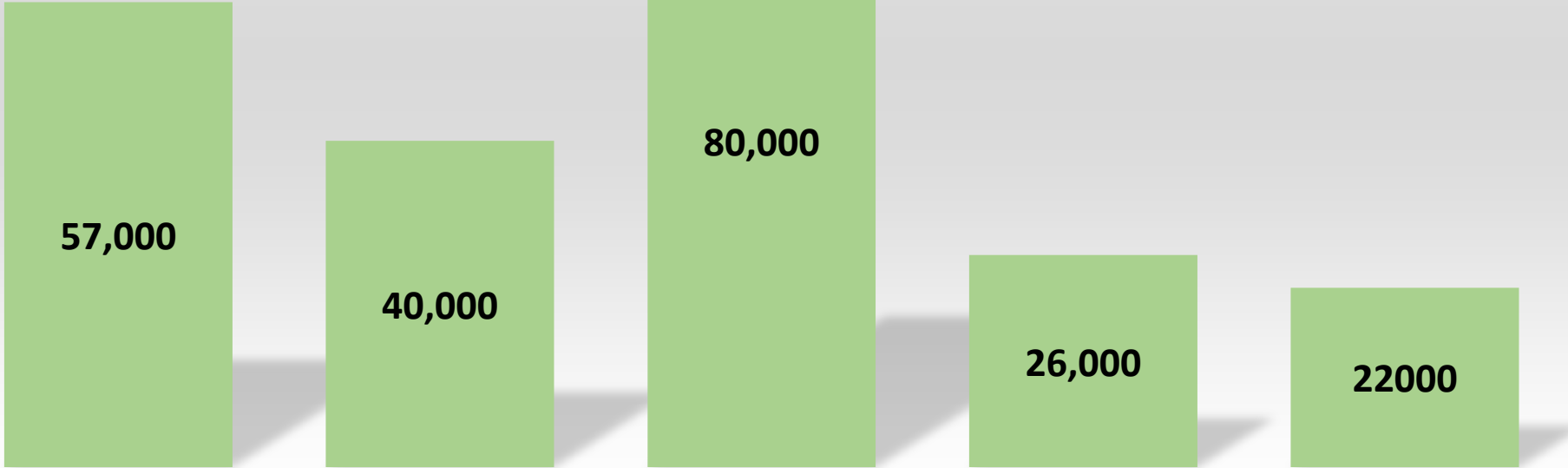
Heathy Forests, Wildlife Habitat, Clean Water Aesthetics



Boundary County Land Use

■ Acres

200,000
Acres of
Private
Land



Agriculture

Industrial Forest

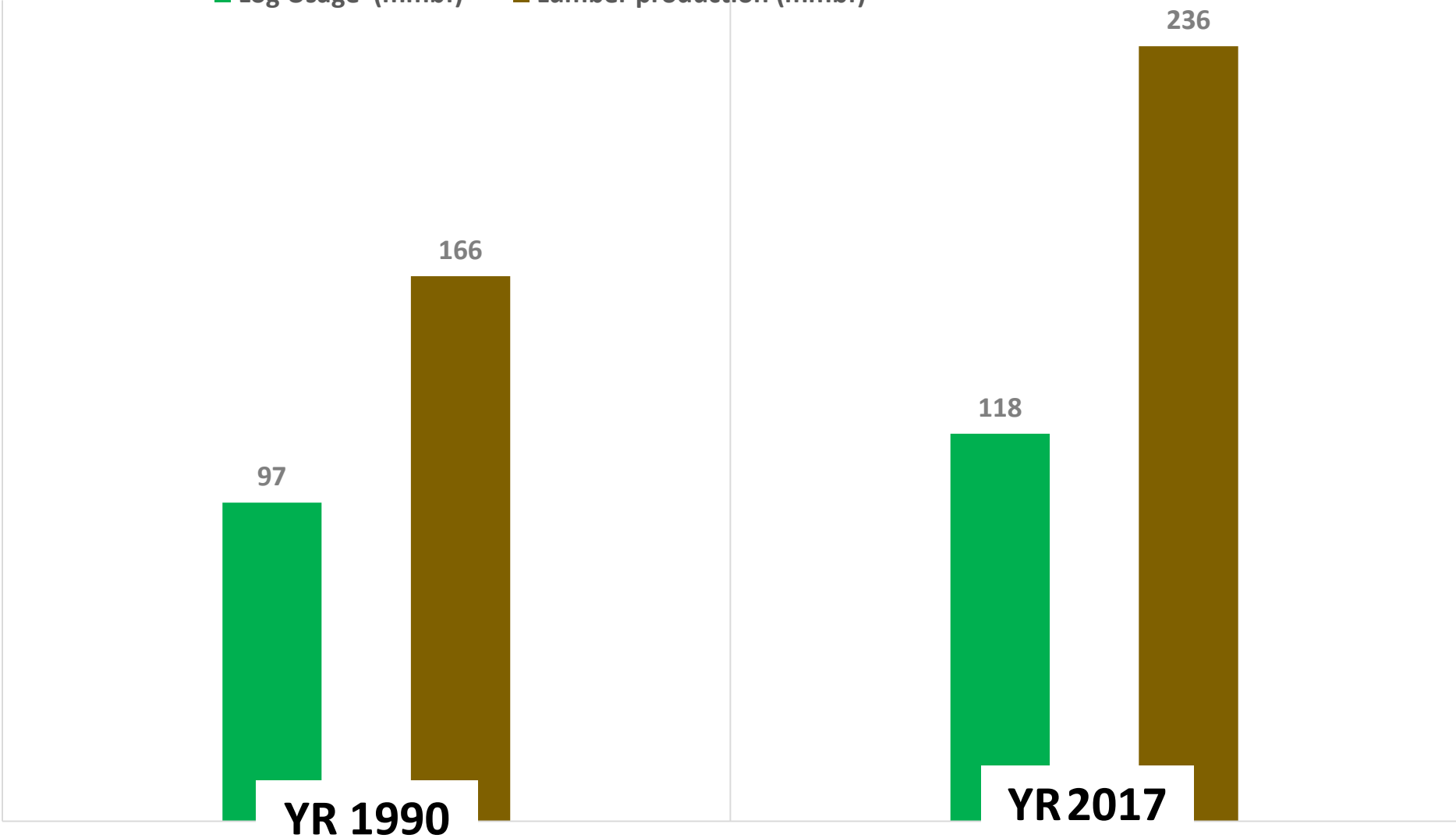
Small Woodland

IDL

Residential

BOUNDARY COUNTY -- MILL PRODUCTION

■ Log Usage (mmbf) ■ Lumber production (mmbf)



Why North Idaho Private Forestlands are Important to our Communities & our Economy

Sources of Timber Supply by Forest Ownership for 6 North Idaho Mills

02/14/18

2017 Mill Data

Total Log Volume: 470 mmbf

Total Employees: 822

Forest Ownership	mmbf	%
Industrial	235	50.0%
Small PVT	105	22.3%
British Columbia	37	7.9%
State (ID,WA,MT)	60	12.8%
Federal	33	7.0%
	470	100.0%

Mill Data included in this Chart

- 1) IFG - Moyie
- 2) IFG - LaClede
- 3) IFG - Chilco
- 4) Alta - Naples
- 5) Stimson - Priest River
- 6) Stimson - Plummer

